

Seasonal Storage Dynamics

by *Gerrit Muller* USN-SE

e-mail: gaudisite@gmail.com

www.gaudisite.nl

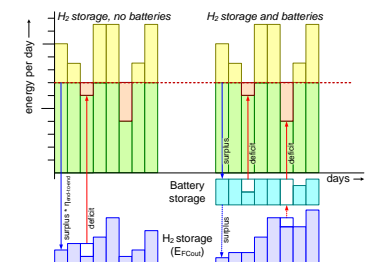
Abstract

A set of dynamic models building on the basic models for storing renewable energy to cope with seasonal variations.

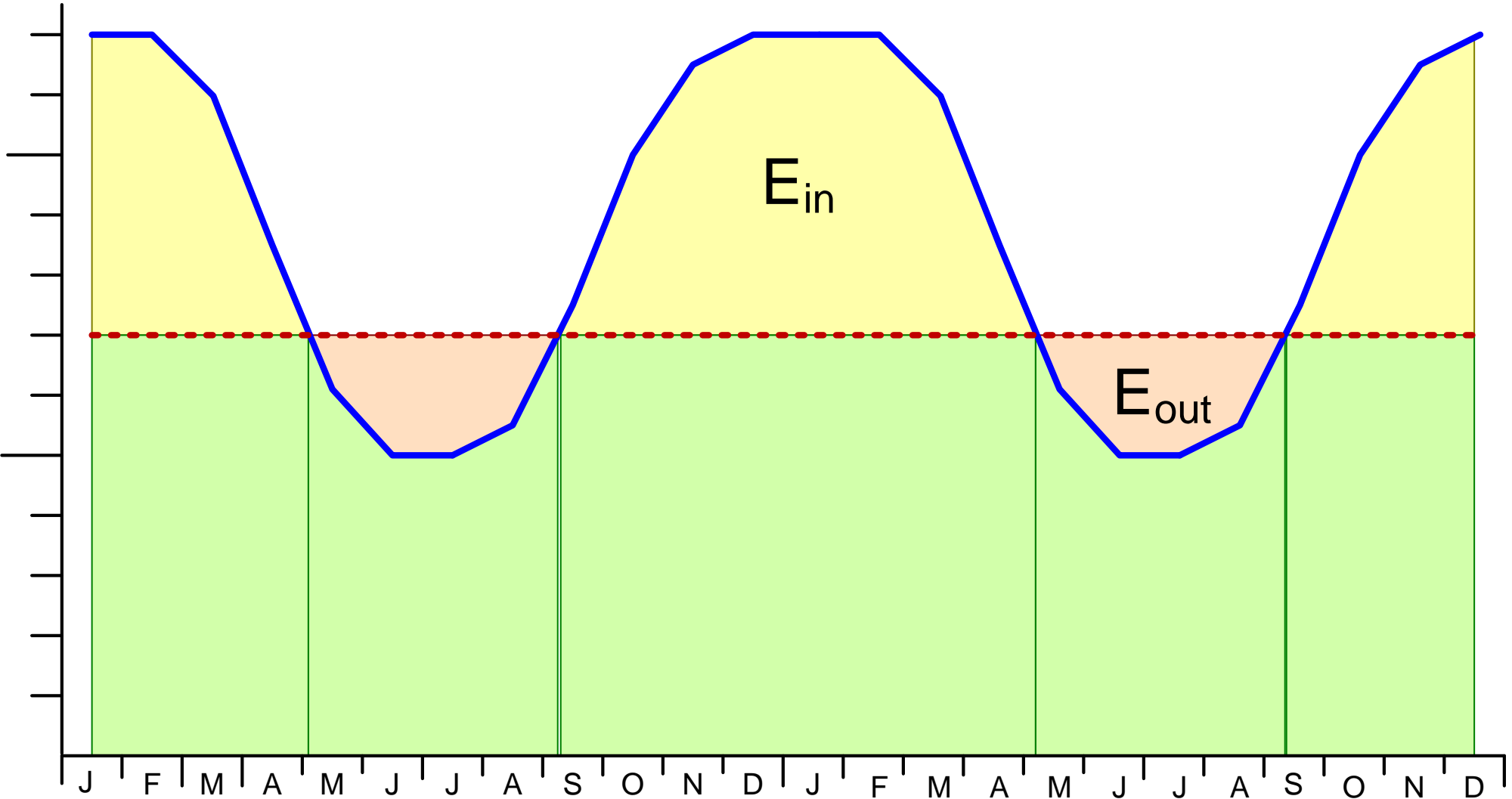
Distribution

This article or presentation is written as part of the Gaudí project. The Gaudí project philosophy is to improve by obtaining frequent feedback. Frequent feedback is pursued by an open creation process. This document is published as intermediate or nearly mature version to get feedback. Further distribution is allowed as long as the document remains complete and unchanged.

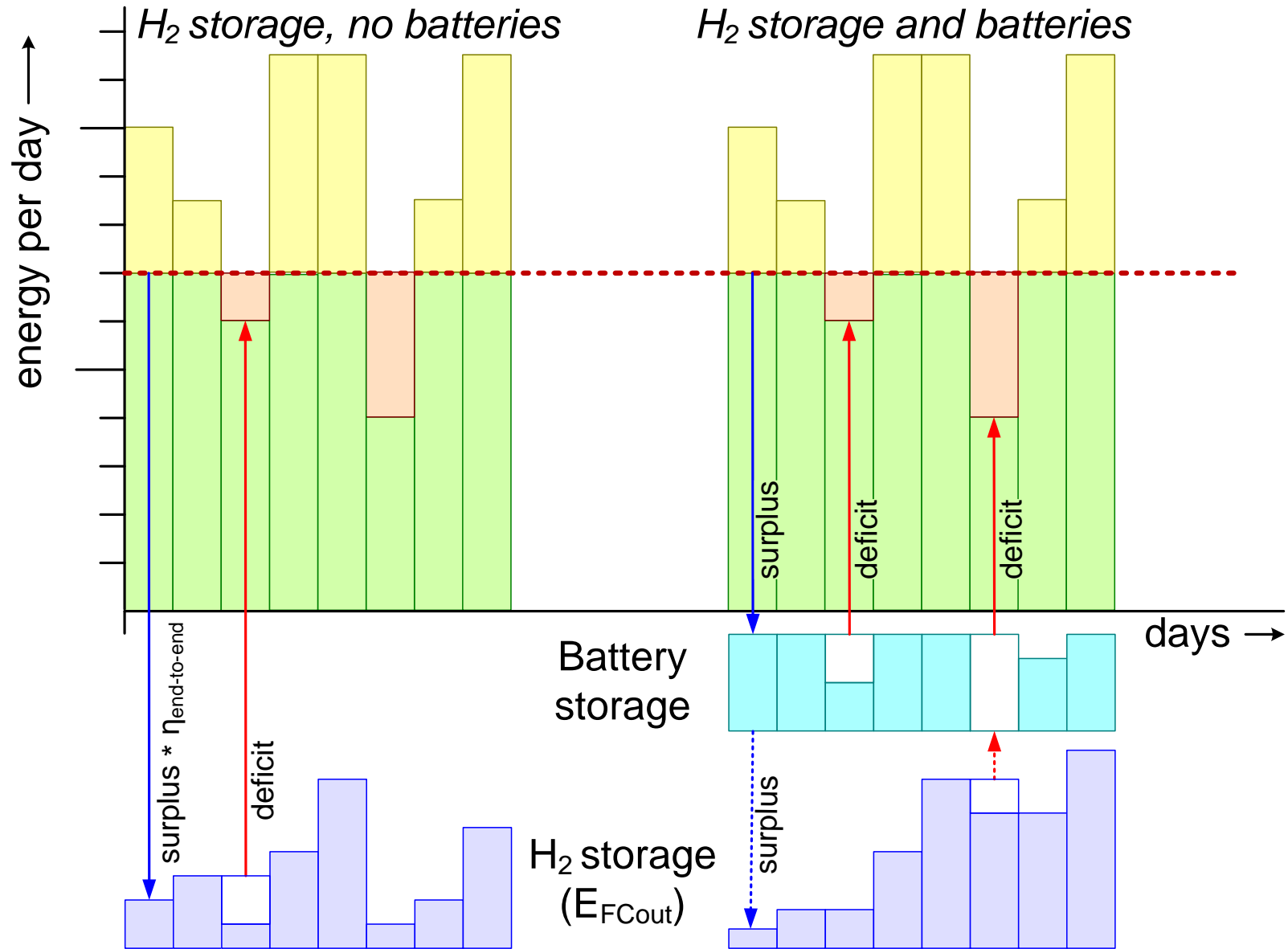
April 4, 2021
status: preliminary
draft
version: 0



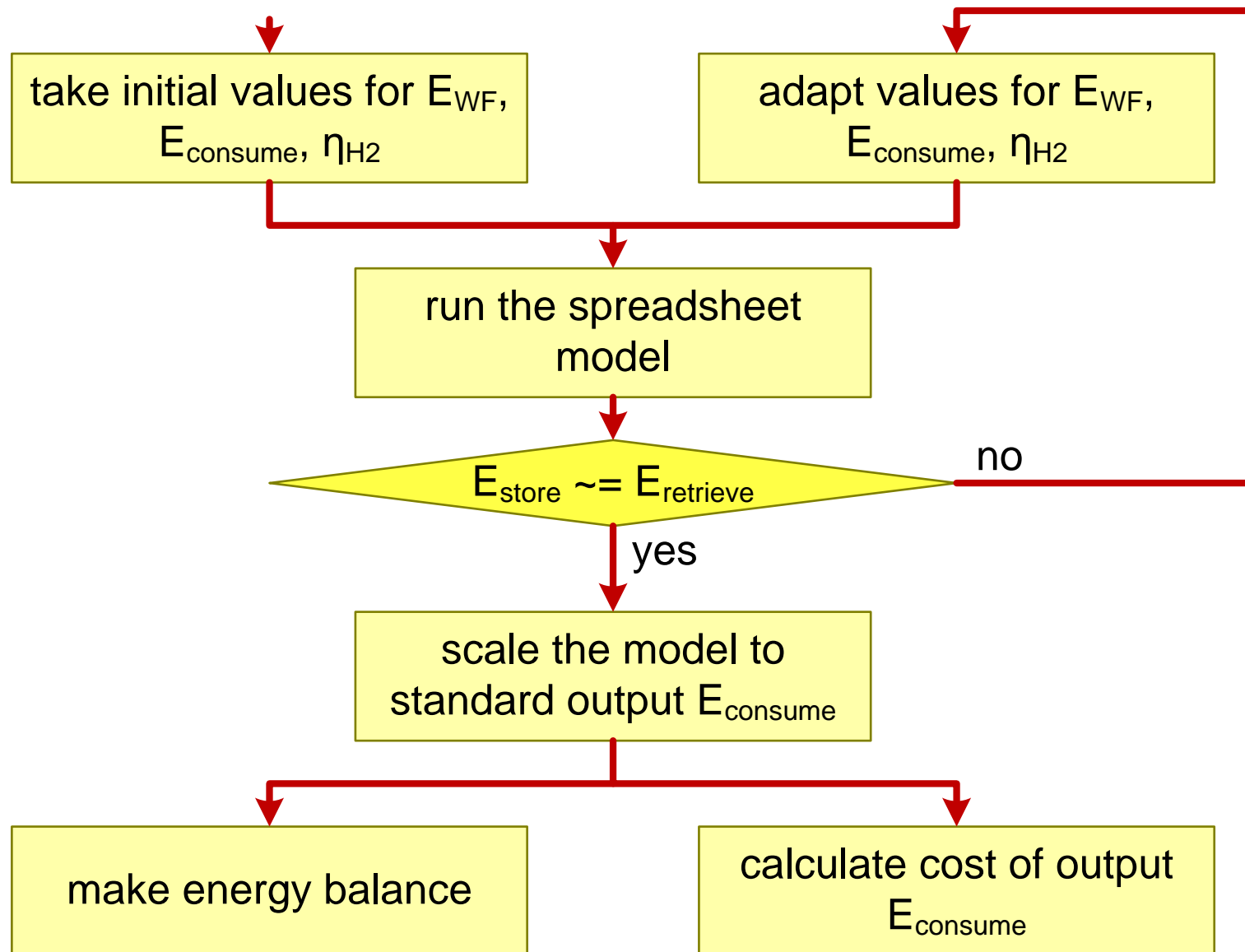
Idealized Production and Consumption



Zooming in on Days



Simulation Workflow



Energy Balance without and with Curtailment

*all numbers
GWh/year*

