

Relevant Questions How-To

by *Gerrit Muller* USN-SE

e-mail: gaudisite@gmail.com

www.gaudisite.nl

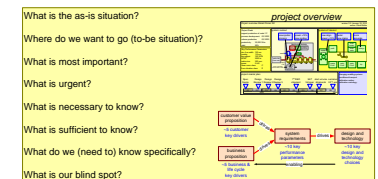
Abstract

A crucial instrument for an architect is asking relevant questions. This how-to provides guidelines in finding and formulating relevant questions.

Distribution

This article or presentation is written as part of the Gaudí project. The Gaudí project philosophy is to improve by obtaining frequent feedback. Frequent feedback is pursued by an open creation process. This document is published as intermediate or nearly mature version to get feedback. Further distribution is allowed as long as the document remains complete and unchanged.

August 16, 2025
status: preliminary
draft
version: 0.1



Genealogy of the Industrial Driven Approach

This how-to is inspired by the visit of Yong Zeng to Kongsberg, June 2023.

He pointed out the importance of the skill of asking questions. When asking questions, the keywords *necessary* and *sufficient* help in formulating relevant questions, as are the WWWHW words.

Find Questions by Expanding these Basic Questions

What is the as-is situation?

Where do we want to go (to-be situation)?

What is most important?

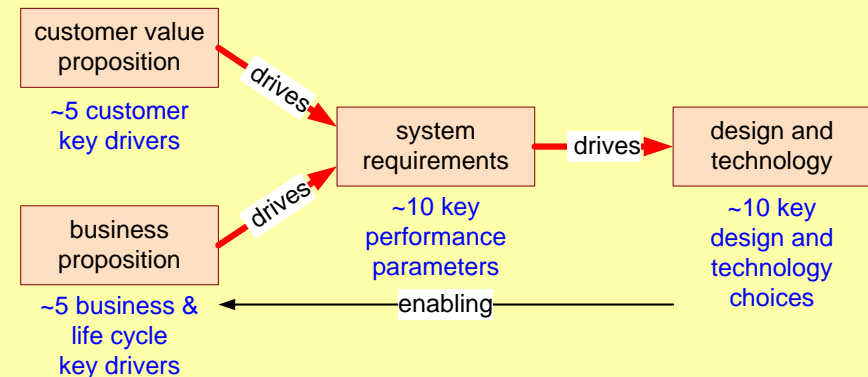
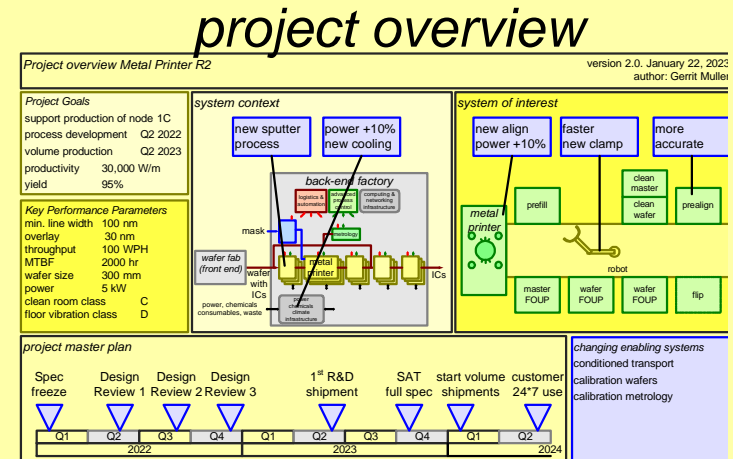
What is urgent?

What is necessary to know?

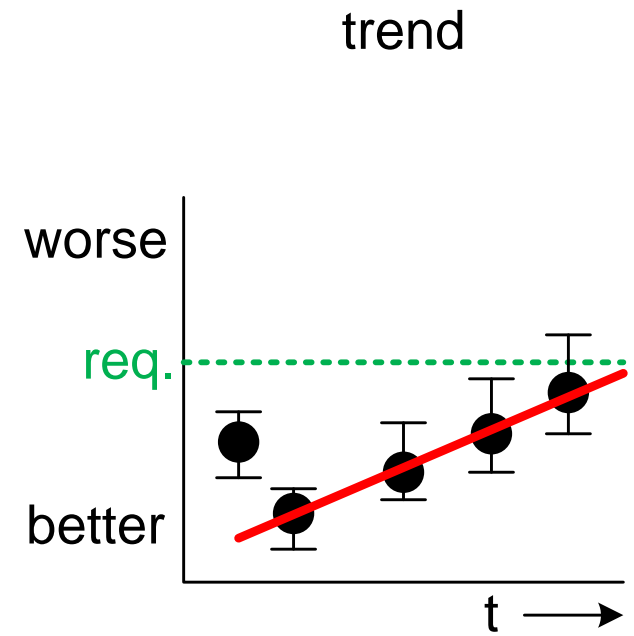
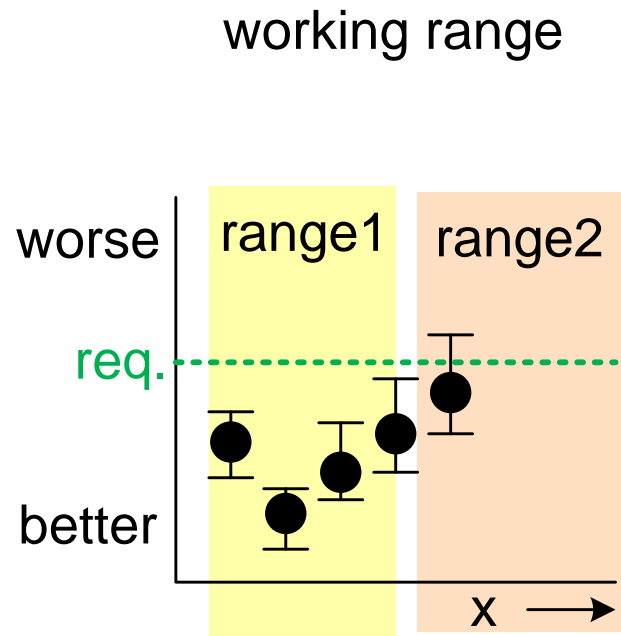
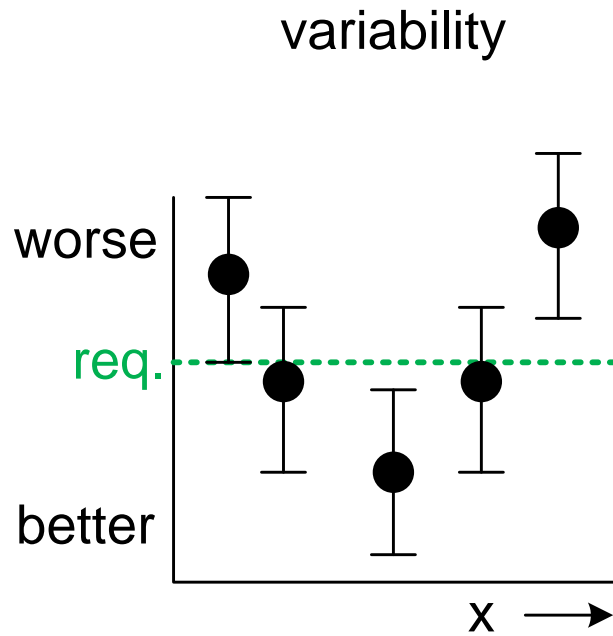
What is sufficient to know?

What do we (need to) know specifically?

What is our blind spot?

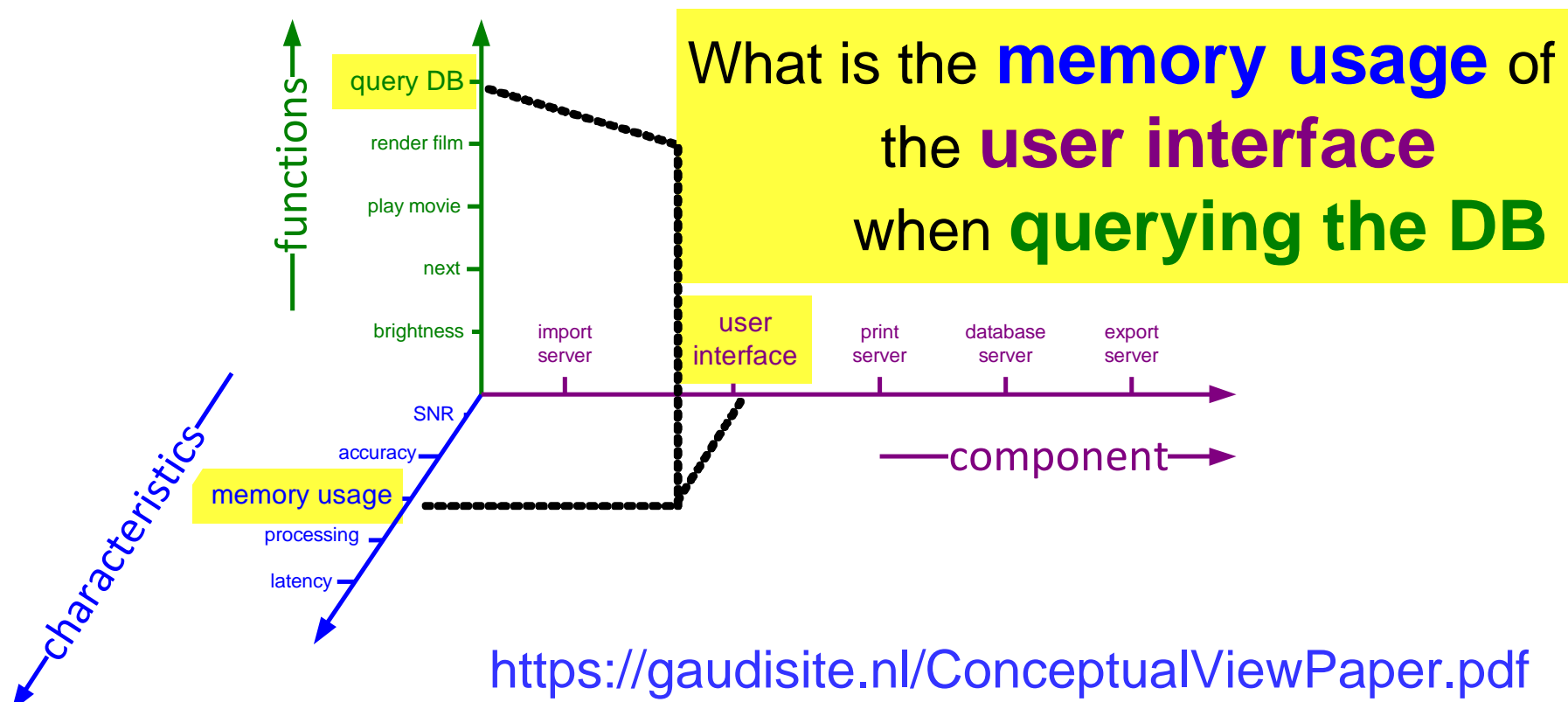


Look at the Available Data and Wonder



Combine Dimensions to Form Specific Questions

How about the **<characteristic>**
of the **<component>**
when performing **<function>**?



Formulate Open Questions

Why	key drivers, project goals
What	key performance parameters, behavior
How	design, technology
Where	
When	life cycle, project milestone
Who	owner, supplier, consumer