

# SEFS How companies work; workflow in organizations

by *Gerrit Muller* USN-SE

e-mail: `gaudisite@gmail.com`

`www.gaudisite.nl`

## Abstract

Companies have a hierarchical organization structure. However, when developing and deploying systems, most work happens across organizational entities. This nugget explains the typical processes for developing and engineering programs and systems.

### Distribution

This article or presentation is written as part of the Gaudí project. The Gaudí project philosophy is to improve by obtaining frequent feedback. Frequent feedback is pursued by an open creation process. This document is published as intermediate or nearly mature version to get feedback. Further distribution is allowed as long as the document remains complete and unchanged.

August 16, 2025

status: preliminary

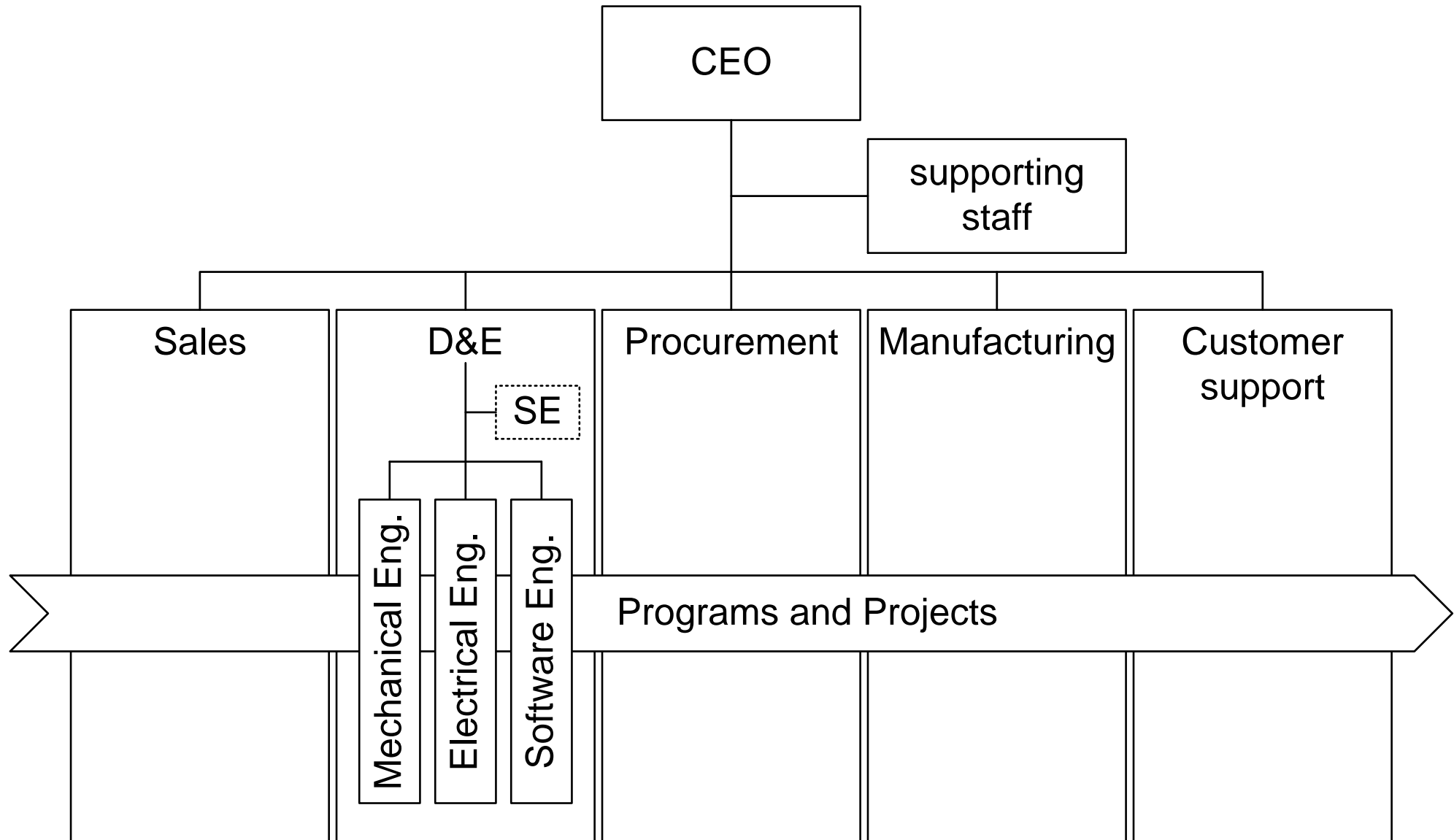
draft

version: 0

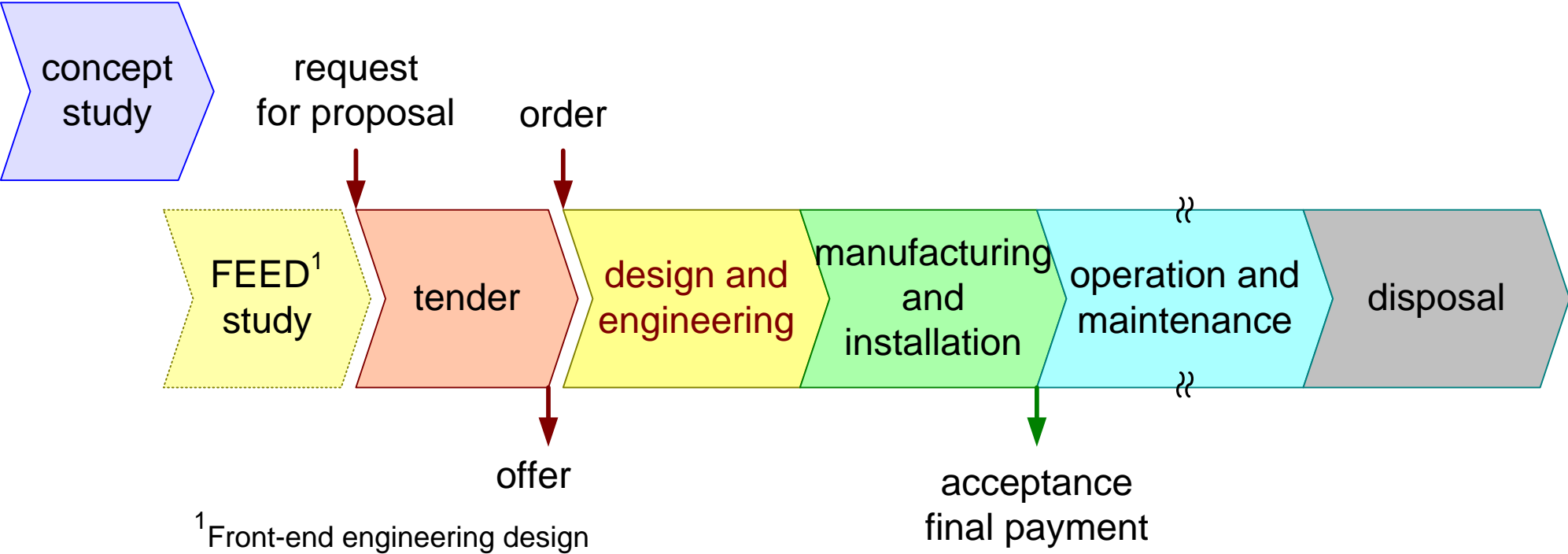
logo

TBD

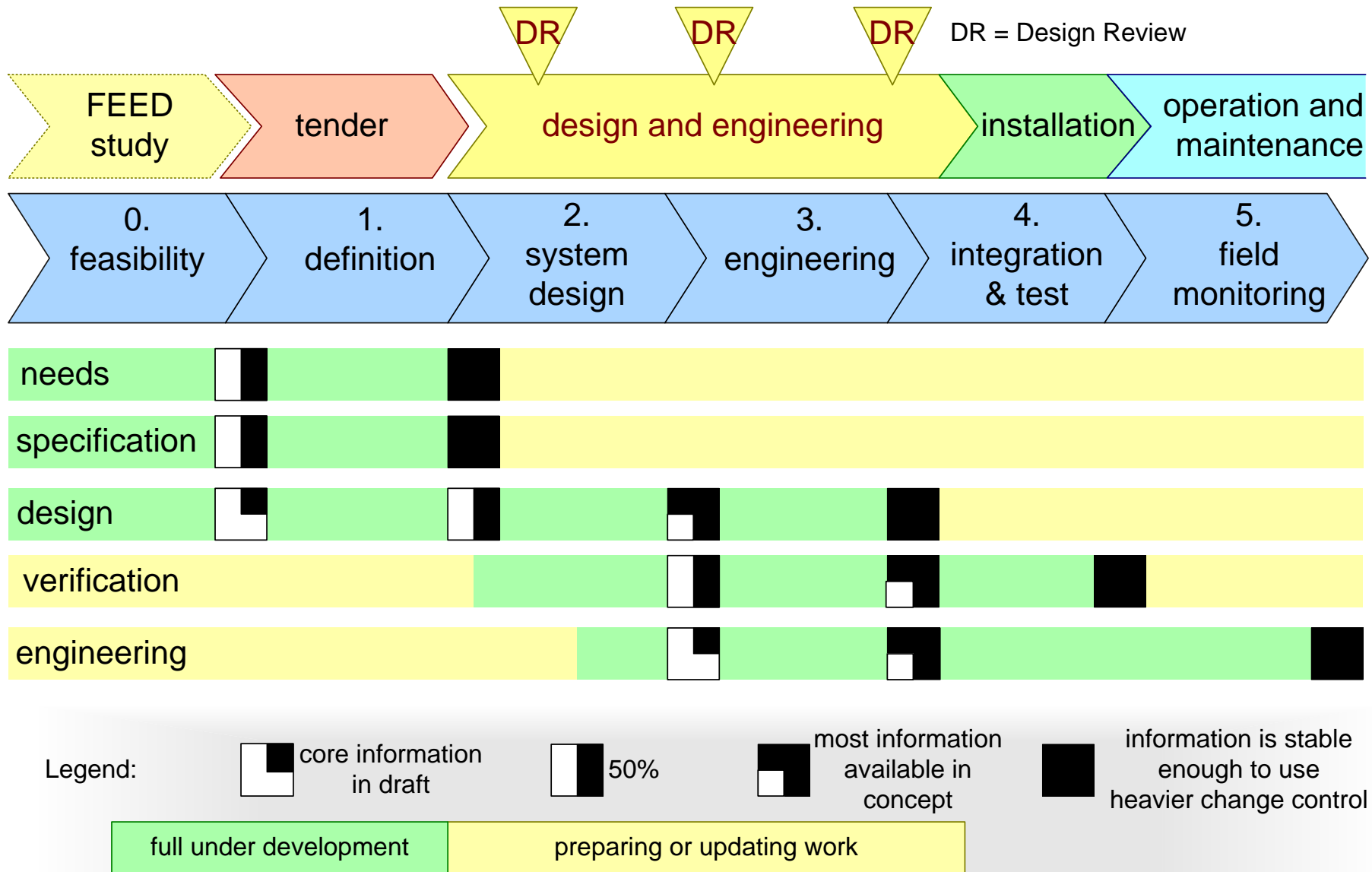
# Typical Company Organization



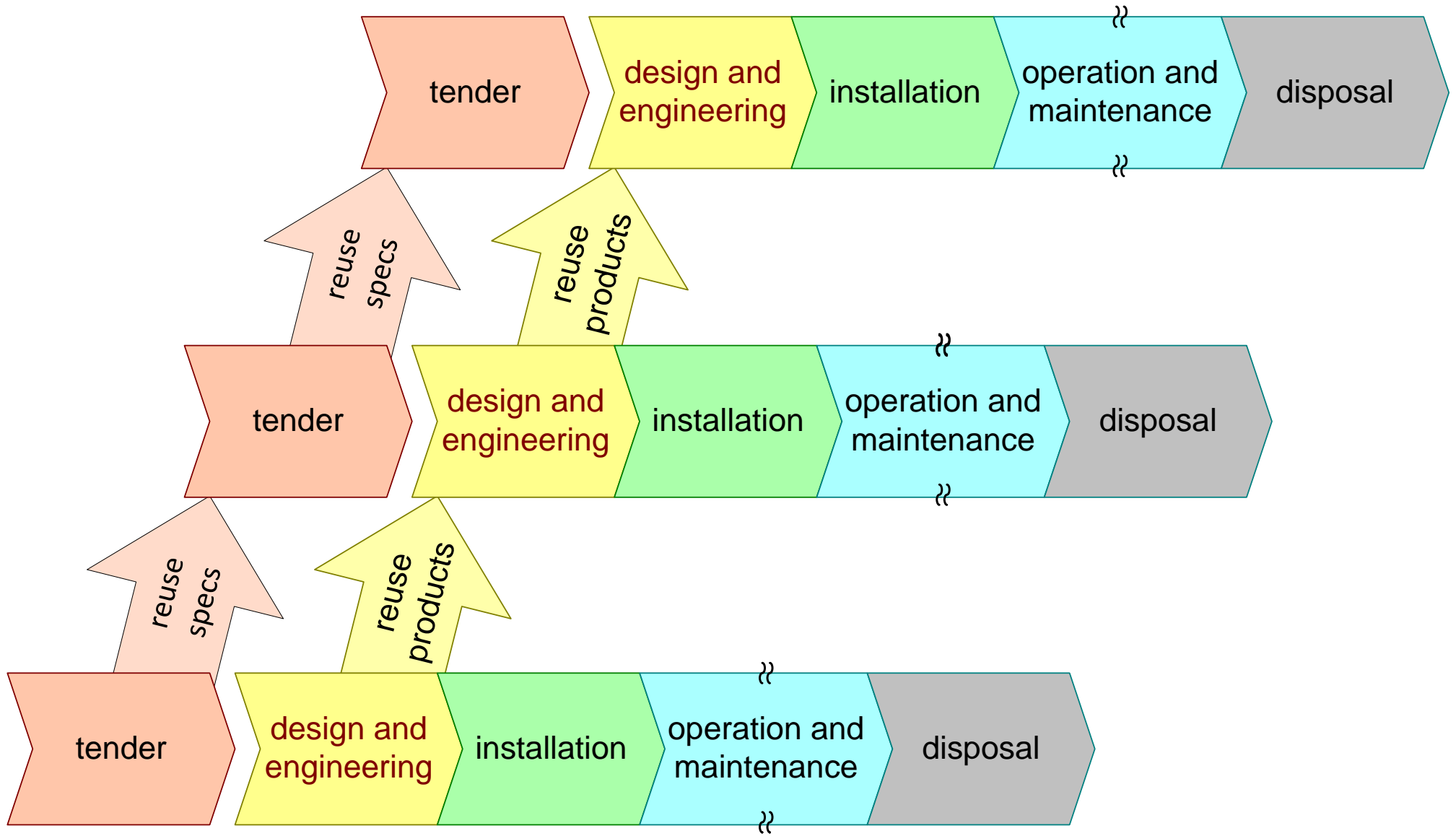
# Project Life Cycle



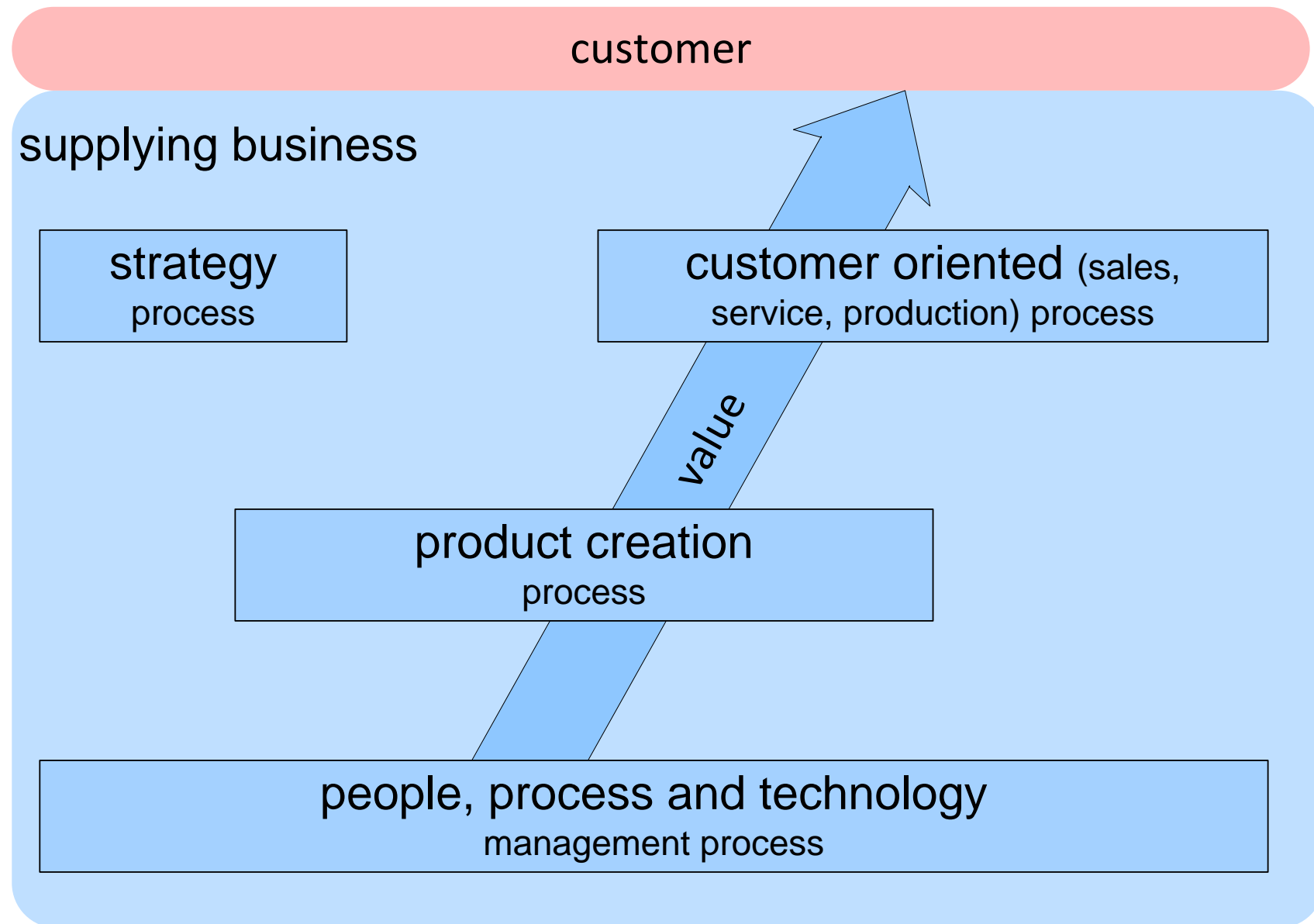
# Phased Project Approach



# Reuse and Products



# Simplified Process View



# Systems Engineering in Projects

