

Introduction How to Engineer Systems as Start-up or in Disruptive Circumstances?

-

logo
TBD

Gerrit Muller

USN-SE

Hasbergsvei 36 P.O. Box 235, NO-3603 Kongsberg Norway

gaudisite@gmail.com

Abstract

Start-ups and organizations responding to disruptive changes share the challenge of responding fast, often with limited suitable resources, while the environment may impose rigid ways of working. This paper explores these challenges and options to cope with them.

Distribution

This article or presentation is written as part of the Gaudí project. The Gaudí project philosophy is to improve by obtaining frequent feedback. Frequent feedback is pursued by an open creation process. This document is published as intermediate or nearly mature version to get feedback. Further distribution is allowed as long as the document remains complete and unchanged.

All Gaudí documents are available at:
<http://www.gaudisite.nl/>

version: 0

status: planned

May 23, 2026

1 Introduction

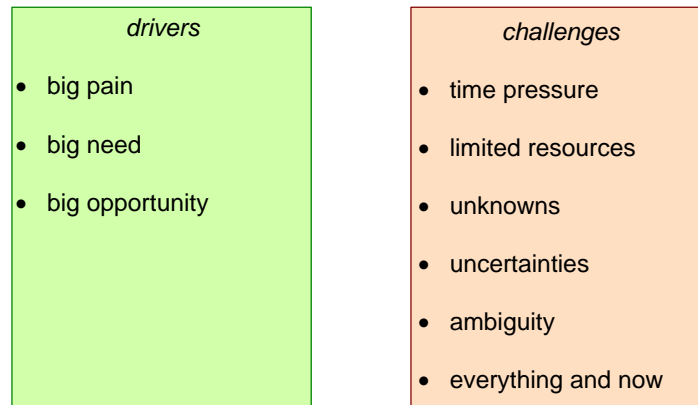


Figure 1: Disruptive Change Consequences

References

- [1] Gerrit Muller. The system architecture homepage. <http://www.gaudisite.nl/index.html>, 1999.

History

Version: 0, date: May 19, 2026 changed by: Gerrit Muller

- Created, no changelog yet